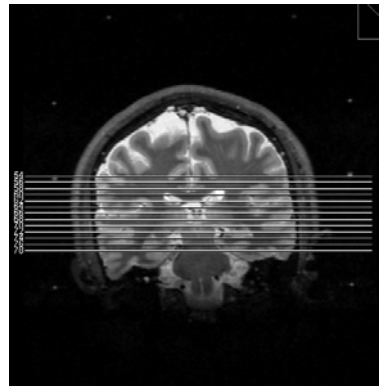
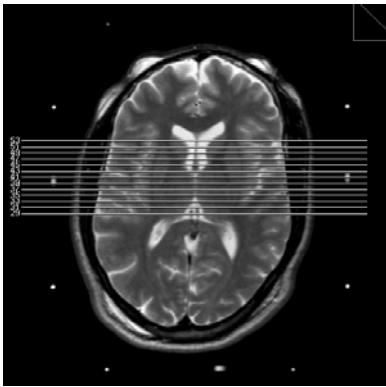


GAMMA: DBS

This protocol is used for patients that are receiving Dr. Friehs gamma knife treatment for deep brain stimulation.

- **DO NOT ANGLE**
- Be sure to include ALL fiducials in FOV.

1. LOCALIZER
2. AXIAL T2 FATSAT full brain
3. CORONAL STIR center at internal capsule
4. AXIAL STIR center at internal capsule
5. GADO SAG MPR



POST SURGICAL SCAN

1. LOCALIZER
2. SAG MPR
3. AXIAL 2DFL